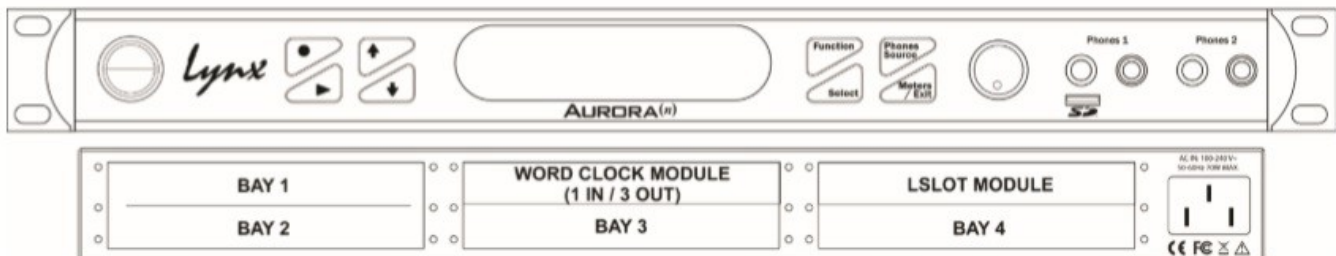


Lynx Studio Technology			
name	description	price brutto	
A U R O R A (N) parts		Inc. 19% Mst	
Aurora(n) CHASSIS	which is the base model with no modules, no converters, no inputs, etc., then add options	1.790 €	no sold separately
LM-AIO8	8 channels line IN and 8 OUT, module for Aurora(n)	1.232 €	
LM-DIG	16 channels IN and 16 channels OUT of 24-bit AES/EBU, with bit-perfect transmission at sample rates of up to 192kHz, module for Aurora(n)	448 €	
LM-PRE4	4-channel preamplifier for microphone/line/HI-Z input module for Aurora(n)	952 €	
LM-A24	2-channels of line IN, 4 channels of line OUT, module for Aurora(n)	840 €	
LM-A4	4 channels of line OUT, module for Aurora(n)	644 €	
LT-USB	Up to 16 channels of I/O @ 96 kHz, Up to 8 channels of I/O @ 192 kHz,module for Aurora(n)	448 €	
LT-HD	One Primary and one Expansion Digilink port Up to 32 channels per HD Core or Accel Core card Supports full channel count up to 192 kHz only for HILO and silver Aurora 16 & 8	299 €	
LT-HD2	One Primary and one Expansion Digilink port Up to 32 channels per HD Core or Accel Core card Supports full channel count up to 192 kHz, compatible with Aurora (n) only !, module for Aurora(n)	448 €	
LT-TB	only for HILO and silver Aurora 16 & 8 Two Thunderbolt™ ports Up to 32 channels Supports full channel count up to 192 kHz Can daisy-chain up to Six LT-TB equipped Aurora and Hilo converters, module for Aurora(n)	679 €	
LT-TB3	Two Thunderbolt™ 3 gen. ports Up to 32 channels Supports full channel count up to 192 kHz Can daisy-chain up to Six LT-TB equipped Aurora (n),module for Aurora(n)	952 €	
LT-DANTE	One Primary and one Secondary port, Extremely low latency, Supports Dante audio networking standard,module for Aurora(n)	952 €	
DB-ADAT	DB-ADAT daughter board that brings ADAT and S/PIDF connectivity when paired with an LM-DIG Aurora(n) module,module for Aurora(n)	112 €	



Aurora (n) sample configuration			
	Aurora(n) 8 – 8 channels line I/O, Lt-USB	3.470 €	
	Aurora(n) 16 – 16 channels line I/O, Lt-TB3	5.206 €	
	Aurora(n) 24 – 24 channels line I/O, Lt-HD2	5.934 €	
	Aurora(n) 32 - 32 channels line I/O, Lt-Dante	7.670 €	
H I L O - mastering converter			
Hilo USB Silver or Black	Reference A/D D/A Converter System Two-channel 24-bit / 192 kHz Analog I/O Two-channel 24-bit / 192 kHz Digital I/O Headphone Amplifier, Flexible monitor controller LT- USB	Silver 3.799 € Black 3.899 €	
Hilo TB3 Silver or Black	Reference A/D D/A Converter System Two-channel 24-bit / 192 kHz Analog I/O Two-channel 24-bit / 192 kHz Digital I/O Headphone Amplifier Flexible monitor controller LT- TB	Silver 4.366 € Black 4.466 €	
Hilo Dante Silver or Black	Reference A/D D/A Converter System Two-channel 24-bit / 192 kHz Analog I/O Two-channel 24-bit / 192 kHz Digital I/O Headphone Amplifier, Flexible monitor controller LT- DANTE	Silver 4.366 € Black 4.466 €	
Hilo Rack	rack 19' 2 H do zamocowania dówch HILO	Black 145 €	
LT-Dante	One Primary and one Secondary port, Extremely low latency, Supports Dante audio networking standard,module for HILO	952 €	
LT-TB3	Supports full channel count up to 192 kHz Can daisy-chain up to Six LT-TB equipped Aurora (n),module for HILO	952 €	
LT-HD2	One Primary and one Expansion DigiLink port Up to 32 channels per HD Core or Accel Core card Supports full channel count up to 192 kHz, compatible with Aurora (n) only !, module for HILO	448 €	
LT-USB	Up to 16 channels of I/O @ 96 kHz, Up to 8 channels of I/O @ 192 kHz,module for HILO	448 €	
LT-cover plate	Cover plate (zaślepka)	12 €	
Lynx Two Kit	Connection for Aurora 16 & 8 with Lynx TWO	65 €	
sound cards			
E22	Reference sound card Two-channel 24-bit / 192 kHz Analog I/O Two-channel 24-bit / 192 kHz Digital I/O	- €	temporarily unavaible
E44	Reference sound card 4-channel 24-bit / 192 kHz Analog I/O 4-channel 24-bit / 192 kHz Digital I/O	- €	temporarily unavaible
AES16e	192 kHz Multichannel AES/EBU Interface Thirty-two-channel 24-bit / 192 kHz Digital I / O	- €	temporarily unavaible
AES16e-SRC	192 kHz Multichannel AES/EBU Interface Thirty-two-channel 24-bit / 192 kHz Digital I/O	- €	temporarily unavaible

AES16e-50	192 kHz Multichannel AES/EBU Interface Thirty-two-channel 24-bit / 192 kHz Digital I/O AES50 Port Available	- €	temporarily unavailable
accessories and cables			
L2/Aur Kit	Allows LynxTWO and Lynx L22 PCI users to add up to 16 analog or digital I/O channels. Includes a six-foot cable to connect the LynxTWO or L22 to the included mounting plate, and internal ribbon cable. Adds up to 16 channels of I/O at 48 kHz, 8 channels of I/O at 88.2/96kHz, 4 channels at 176.4/192 kHz.	66 €	
AVP-1	Vented Panel for Aurora	100 €	
CBL-AIN85 aurora cable	Analog input cable. Male 25 pin D-sub connector (white shield) to eight female XLR connectors; 5 meters (16.4 feet) long; TASCAM wiring standard.	130 €	
CBL-AOUT85 aurora cable	Analog output cable. Male 25 pin D-sub connector (black shield) to eight male XLR connectors; 5 meters (16.4 feet) long; TASCAM wiring standard.	130 €	
CBL-DIGY85 aurora cable	Digital input/output cable; eight channels AES/EBU I/O. Male 25 pin D-sub connector (yellow) with four female XLR connectors for input and four male XLR connectors for output; 5 meters (16.4 feet) long; Yamaha pinout configuration.	130 €	
CBL-AES1605 aurora cable	26-pin high-density male D-sub to 25-pin male D-sub. Supports 4 stereo (8 mono) channels of input and output. Connects AES16 or AES16e to Aurora digital I/O. Twelve-foot, 110-ohm shielded twisted pair cabling. <i>Note: One cable needed for Aurora 8; pairs are required for Aurora 16.</i>	66 €	
CBL-L22Audio	E22 Audio Cable. 2 XLR-M/2 XLR-F to DB25	50 €	
CBL-L22Sync	E22 Sync Cable. 2 XLR to HD15 for Digital and 2 BNC for Word Clock I/O	50 €	
CBL-L2AudioA	E44 Audio Cable. 4 XLR-M/4 XLR-F to DB25	88 €	
CBL-ESYNC	E44 Sync Cable. 4 XLR to HD15 for Digital and 2 BNC for Word Clock I/O	88 €	
CBL-XFDR18	S/PDIF Adapter. XLR Female to RCA Male, 18" Long; Digital Out to S/PDIF	20 €	
CBL-AES1604	26-pin high-density male D-sub to four female XLR (8 mono AES input channels), four male XLR (8 mono AES output channels), and one female BNC (word clock I/O). Six-foot, 110-ohm shielded twisted pair cabling. For sound card AES16e cable	132 €	
LYN-AES16E50 KIT	External CAT5e/6 bracket for AES16e-50.	110 €	
CBL-ICC	Internal clock cable	16 €	
LS-ADAT	Internal Lstream standard cable	12 €	
LT-ADAT	Internal LTADAT to Aurora cable	12 €	

Sound import

Am Weingarten 35 90518 Altdorf GERMANY
Mob.: +48 502 671 456; +49 918 790 4377
info@soundimport.pl, www.soundimport.pl

uwaga: firma Sound import nie ponosi odpowiedzialności za błędy w cenniku, cennik stanowi ofertę poglądową